



AMPHIBIANS FIELD STUDY FACT SHEET

Pickerel frog.

This fact sheet provides information about VIA HFR's amphibian study program. It tells you how to get answers to your questions and give us your comments. Your insights will help shape the program.

What is an amphibian study?

An amphibian study focuses on frogs, toads and salamanders (amphibians) and where they live. The study will help HFR planners protect amphibians while building and operating the new railway.

Key terms

Amphibian

Amphibians are mostly four-legged animals with backbones that warm their body using the surrounding environment and live the early part of their life in or near water. Amphibians include frogs, toads and salamanders.

Why study amphibians?

Amphibians eat a variety of insect pests, which is beneficial to agriculture and human health. Amphibians moist, permeable skin also makes them vulnerable to drought and toxic substances, making them exceptional indicators of ecosystem health. Field studies will help us better understand and protect amphibians and their habitats when building and operating the new railway, while determining a baseline for future studies.



Western Chorus frog.



What do amphibian studies involve?



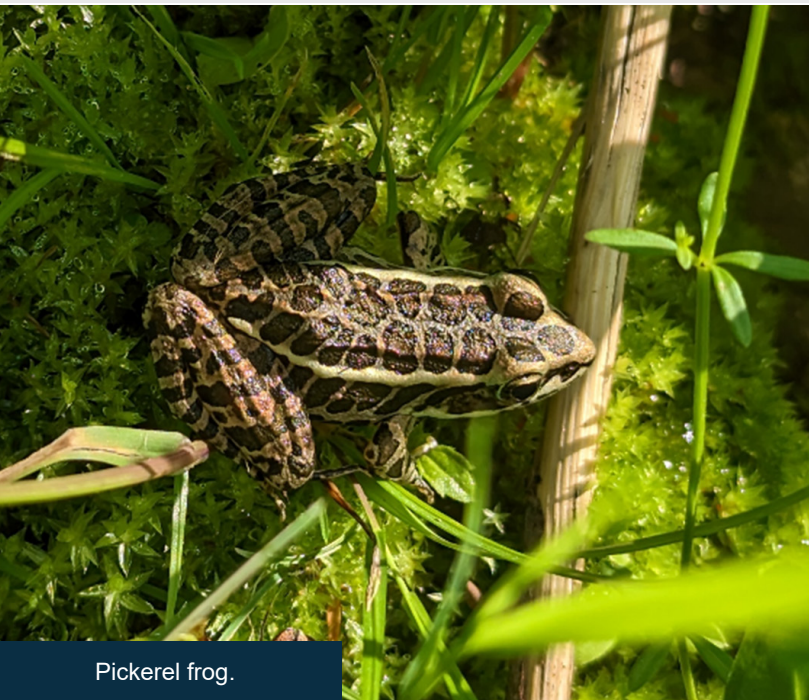
Amphibian studies specifically look for the presence of western chorus frogs, salamanders and other amphibians. HFR planners will listen for and record amphibian calls from wetlands, woodlots and surrounding areas. They will also look under logs and through moss mats within or near wetlands.

These studies will be complemented by other sources of information, including Indigenous knowledge (when provided).

When will amphibian studies occur?

Amphibian studies generally take place during the spring and early summer. The 2024 amphibian studies will occur between April and June.

Study Type	Jan	Feb	Mar	Apr	May	Jun	Jul	Aug	Sept	Oct	Nov	Dec
Amphibians												



Pickerel frog.

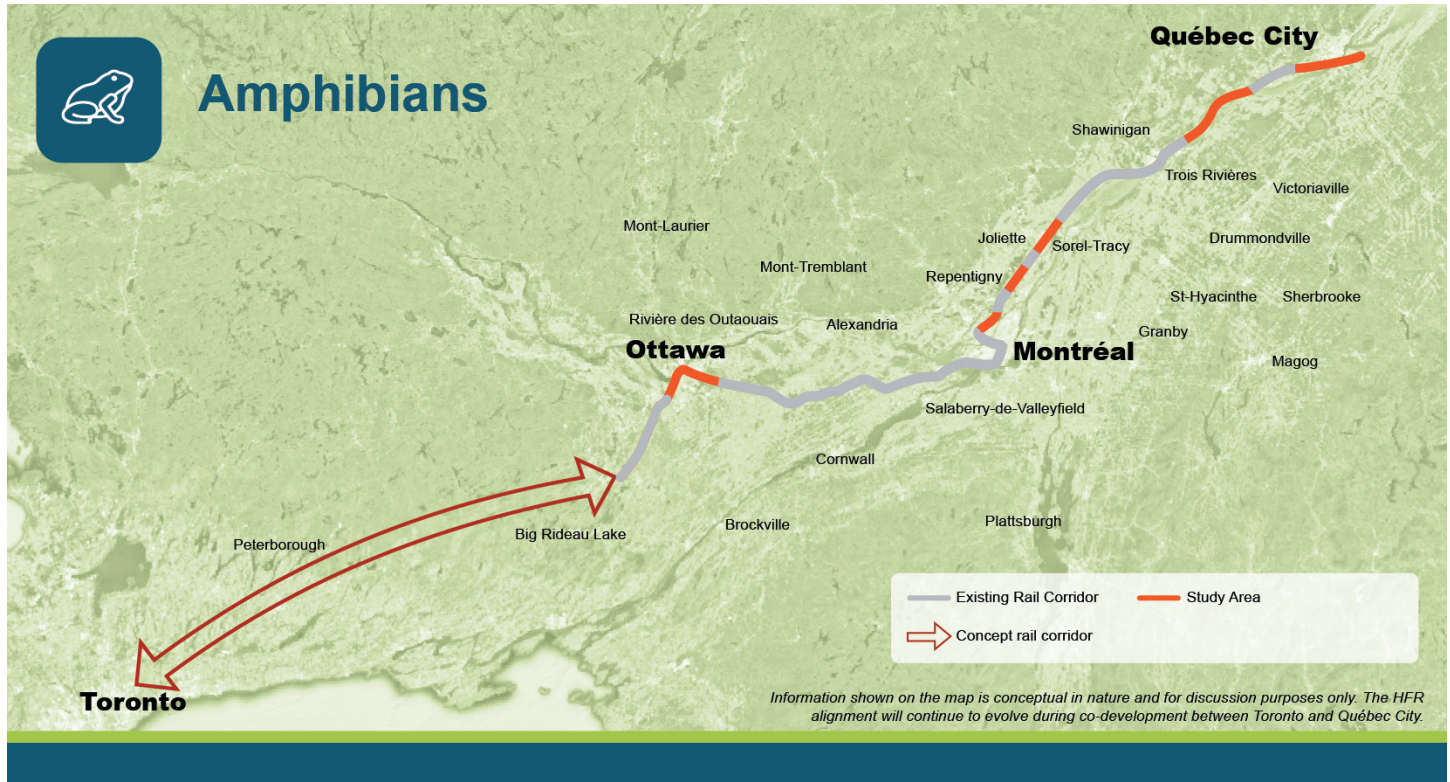


Western Chorus frog.



Where are amphibian studies taking place?

The 2024 amphibian studies will take place along sections of existing railway routes in Ontario, from Twin Elm up to Ottawa and down to Vars, and in Québec near Laval to the 740 highway in Québec City.



Where can I learn more about HFR?

If you're interested in getting more information, or if you have a question or comment, please visit www.hfr-tgf.ca. You may also contact the HFR Team via email at: questions@hfr-tgf.ca

For more information on Canada's impact-assessment process, visit <https://www.canada.ca/en/impact-assessment-agency.html>